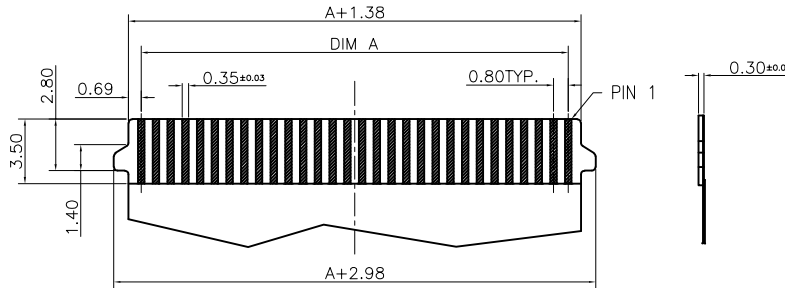
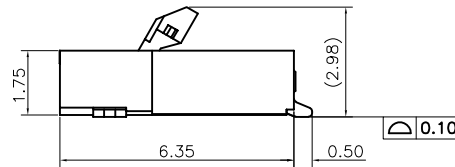
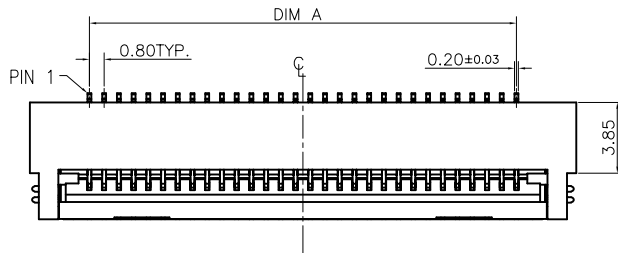


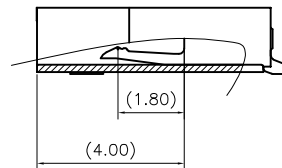
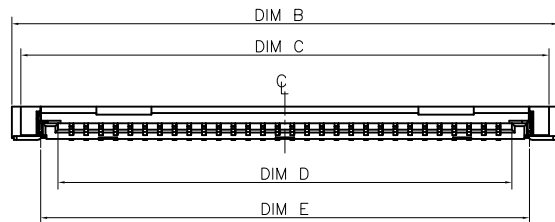
RECOMMENDED PCB LAYOUT
GENERAL TOLERANCE ±0.05



RECOMMENDED FPC/FFC DIMENSIONS
GENERAL TOLERANCE ±0.03



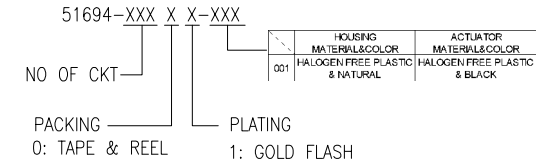
SCALE 6:1



SCALE 6:1

NOTES:

1. MATERIAL:
 - 1.1 HOUSING: THERMOPLASTIC, HIGH TEMP., UL94V-0. NATURAL
 - 1.2 ACTUATOR: THERMOPLASTIC, HIGH TEMP., UL94V-0. BLACK
 - 1.3 CONTACT: COPPER ALLOY
 - 1.4 FITTING NAIL: COPPER ALLOY
2. FINISH:
 - 2.1 CONTACT:
 - 50u" MIN. NICKEL UNDERPLATING OVERALL.
 - 1:GOLD FLASH.
 - 2.2 FITTING NAIL:
 - 50u"MIN. NICKEL UNDERPLATING OVERALL.
 - 90u"MIN. MATT TIN PLATING ON SOLDER TAILS(LEAD FREE).
3. REFLOW SOLDER CAPABLE TO 260°C PER ACES SPEC.
4. SPEC. PLS. REFER TO PS-51518-xxxx-xxx
5. PACKAGE PLS. REFER TO 51518-xxxx-TRP
6. PART NUMBER



CKT	DIM A	DIM B	DIM C	DIM D	DIM E
30	23.20	29.68	28.68	24.65	26.55

QUALITY SYMBOLS MAJOR Ⓢ CRITICAL Ⓢ GENERAL TOLERANCES (UNLESS SPECIFIED) X. ±0.5 .X ±0.25 .XX ±0.15 .XXX ±0.1 ANGLES ±2°	DRAWN BY Xu.Bin CHECKED BY Xu.Zhi Yong APPROVED BY Xu.Zhi Yong	DATE 21/08/18 DATE 21/08/18 DATE 21/08/18		TITLE 0.8mm pitch Easy On FPC Conn. SMT R/A B/C Type
	UNITS mm SCALE 1:1			